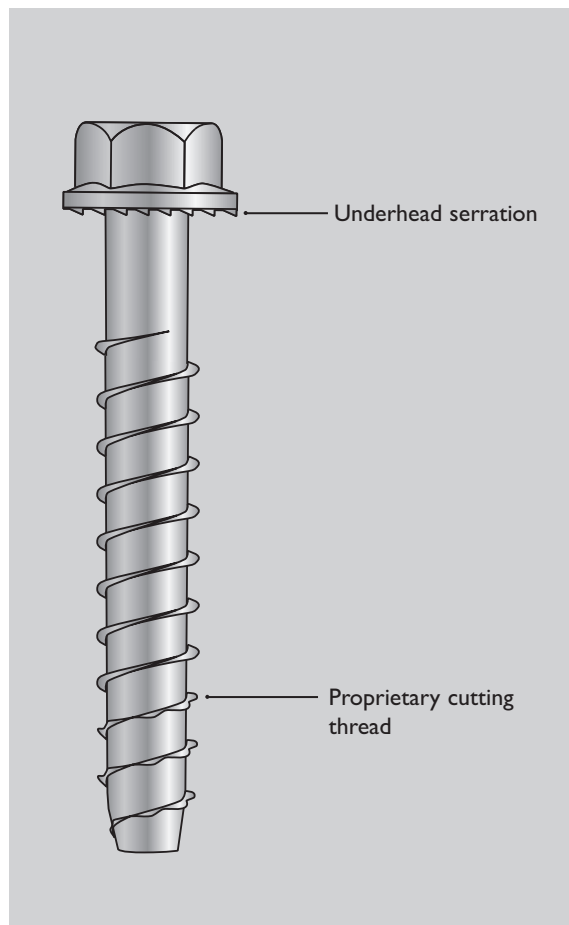


**| DESCRIPTION**

UCAN TORPEDO® BOLT is an excellent anchoring solution for medium duty and temporary applications. It's mechanically galvanized for corrosion resistance and a wide range of applications. Matched with a standard UCAN ANSI tolerance drill bit, this fastener exhibits consistently high load values. UCAN TORPEDO® BOLT installs quickly leaving the clean appearance of a finished hex washer head on the working surface.

**| FEATURES**

- Bimetal version available in 304 and 316 stainless steel
- Use with UCAN standard ANSI compliant drill
- Corrosion resistant, mechanical galvanizing for a wide range of applications.
- Fast installation and reduced edge distance requirements, compared to mechanical expansion anchors.
- One piece fastener with finished hex washer head.
- Unique thread pattern facilitates ease of installation
- Anchor can be set with an impact or manual socket wrench.
- Underhead serrations.
- Removable—Ideal for temporary anchoring applications.
- Anchor size is stamped on head for easy identification and enhanced quality control after anchor installation.
- ICC-ES® Listing is pending



**| TYPICAL APPLICATIONS**

- Racking, Railing, Sill plates, Stadium seating.
- Tilt-up braces, Formwork, Anchoring equipment

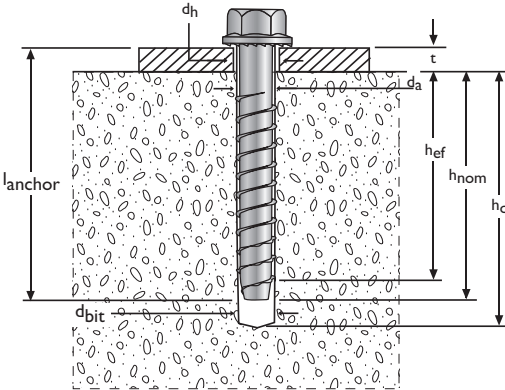
**| LIMITATIONS**

Not recommended for installation into uncured concrete (less than 7 days old) and permanent outdoor applications.

**| MATERIAL SPECIFICATIONS**

Anchor body:	Heat treated carbon steel
Corrosion protection:	Mechanically galvanized as per ASTM B-695, Class 65, Type I
Head style:	Hex flange head with locking serrations

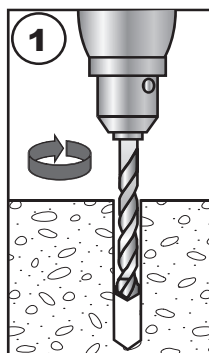
**INSTALLATION DATA**



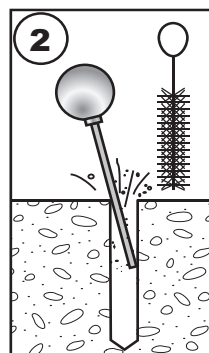
**Installation Details**

Characteristic	Symbol	Unit	Nominal Anchor diameter							
			1/4	3/8	1/2	5/8	3/4	1	1-1/4	1-1/2
Anchor diameter	$d_a$	in.	1/4	3/8	1/2	5/8	3/4	1	1-1/4	1-1/2
Drill bit diameter	$d_{bit}$	in.	1/4	3/8	1/2	5/8	3/4	1	1-1/4	1-1/2
Clearance hole diameter	$d_h$	in.	3/8	1/2	5/8	3/4	7/8	1	1-1/4	1-1/2
Installation Torque	$T_{inst}$	ft-lbs	8	25	55	85	150			
Nominal embedment	$h_{nom}$	in.	1-3/4	2	3-3/4	2	3-3/4	2	3-3/4	3-3/4
Effective embedment	$h_{ef}$	in.	1-1/2	1-3/4	3-1/2	1-3/4	3-1/2	1-3/4	3-1/2	3-1/2
Minimum hole depth	$h_o$	in.	2	2-1/2	4-1/4	2-1/2	4-1/4	2-1/2	4-1/4	5
Critical edge distance	-	in.	2	3-1/2	5-1/2	3-1/2	5-1/2	3-1/2	5-1/2	5-1/2
Minimum edge distance	-	in.	1-3/4	1-3/4	1-3/4	1-3/4	1-3/4	1-3/4	1-3/4	1-3/4
Critical anchor spacing	-	in.	3	4-1/2	6	7-1/2	9			
Minimum anchor spacing	-	in.	1	1-1/2	2	2-1/2	3			
Head height	-	in.	1/4	3/8	31/64	19/32	45/64			
Washer OD	-	in.	1/2	3/4	1	1-5/32	1-3/8			
Wrench socket size	-	in.	7/16	9/16	3/4	15/16	1-1/8			

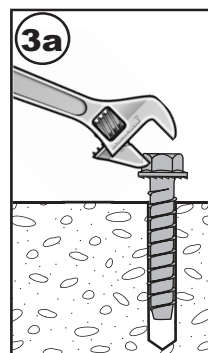
**INSTALLATION INSTRUCTIONS**



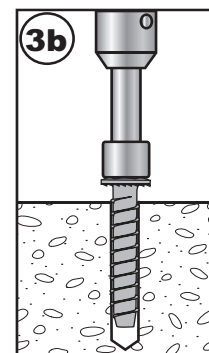
1 Drill hole to the specified diameter and depth



2 Blow out dust from the hole



3a Place anchor in drilled hole



3b Apply installation torque to set anchor

**DESIGN DATA**

**Ultimate and Allowable Load Data**

Anchor diameter	Drill bit diameter	Nominal embedment	Units	Allowable Load Data				Ultimate Load Data			
				3000 psi concrete		6000 psi concrete		3000 psi concrete		6000 psi concrete	
in.	in.	in.		Tension	Shear	Tension	Shear	Tension	Shear	Tension	Shear
1/4	1/4	1-1/2	lbs	181	430	256	670	725	1719	1025	2680
			kN	0.81	1.91	1.14	2.98	3.22	7.65	4.56	11.92
1/4	1/4	2-1/2	lbs	610	430	863	670	2440	1719	3450	2680
			kN	2.71	1.91	3.84	2.98	10.85	7.65	15.35	11.92
3/8	3/8	2	lbs	916	892	1295	1742	3664	3567	5182	6967
			kN	4.07	3.97	5.76	7.75	16.30	15.87	23.05	30.99
3/8	3/8	3-1/2	lbs	2080	2050	2941	3007	8319	8199	11764	12030
			kN	9.25	9.12	13.08	13.38	37.00	36.47	52.33	53.51
1/2	1/2	2	lbs	853	1088	1206	1686	3411	4350	4824	6744
			kN	3.79	4.84	5.37	7.50	15.17	19.35	21.46	30
1/2	1/2	3-1/2	lbs	2190	2235	3097	3068	8759	8938	12387	12272
			kN	9.74	9.94	13.78	13.65	38.96	39.76	55.1	54.59
5/8	5/8	2	lbs	864	1164	1221	1643	3454	4657	4885	6573
			kN	3.84	5.18	5.43	7.31	15.37	20.72	21.73	29.24
5/8	5/8	3-1/2	lbs	2324	2389	3287	3168	9296	9557	13147	12670
			kN	10.34	10.63	14.62	14.09	41.35	42.51	58.48	56.36
3/4	3/4	2-1/2	lbs	1078	1569	1525	2254	4313	6276	6099	9015
			kN	4.80	6.98	6.78	10.03	19.18	27.92	27.13	40.1
3/4	3/4	4	lbs	2632	3167	3723	4729	10530	12667	14891	18918
			kN	11.71	14.09	16.56	21.04	46.84	56.35	66.24	84.15

Note: The data presented in this table is based on independent laboratory testing at critical anchor spacing and edge distance.

**PRODUCT ORDERING INFORMATION**

Part number	Head style	Anchor size	Drill bit diameter	Wrench socket size	Minimum embedment	Box qty	Casse qty
UTB 14214	hex	1/4 x 2-1/4	1/4	7/16	1-1/4	100	800
UTB 143	hex	1/4 x 3	1/4	7/16	2-1/4	100	800
UTB 38134	hex	3/8 x 1-3/4	3/8	9/16	3/4	50	400
UTB 38212	hex	3/8 x 2-1/2	3/8	9/16	1-1/2	50	400
UTB 383	hex	3/8 x 3	3/8	9/16	2	50	400
UTB 384	hex	3/8 x 4	3/8	9/16	3-1/2	50	400
UTB 385	hex	3/8 x 5	3/8	9/16	3-1/2	25	75
UTB 123	hex	1/2 x 3	1/2	3/4	2	50	150
UTB 12212	hex	1/2 x 2-1/2	1/2	3/4	2	50	400
UTB 124	hex	1/2 x 4	1/2	3/4	3-1/2	40	120
UTB 125	hex	1/2 x 5	1/2	3/4	3-1/2	30	90
UTB 583	hex	5/8 x 3	5/8	15/16	2	25	75
UTB 584	hex	5/8 x 4	5/8	15/16	3-1/2	25	75
UTB 585	hex	5/8 x 5	5/8	15/16	3-1/2	20	60
UTB 586	hex	5/8 x 6	5/8	15/16	3-1/2	20	60
UTB 344	hex	3/4 x 4	3/4	1-1/8	2	15	45
UTB 345	hex	3/4 x 5	3/4	1-1/8	3-1/2	15	45
UTB 346	hex	3/4 x 6	3/4	1-1/8	3-1/2	15	45
UTB 347	hex	3/4 x 7	3/4	1-1/8	3-1/2	15	45

**LOAD ADJUSTMENT FACTORS (ALLOWABLE STRESS DESIGN)**

**Anchor Spacing**

Diameter	Critical spacing		Minimum Spacing		Reduction Factor	
	Tension	Shear	Tension	Shear	Tension	Shear
1/4	3"	3"	1"	1"	0.5	0.7
3/8	4-1/2"	4-1/2"	1-1/2"	1-1/2"		
1/2	6"	6"	2"	2"		
5/8	7-1/2"	7-1/2"	2-1/2"	2-1/2"		
3/4	9"	9"	3"	3"		

**Edge Distance**

Diameter	Critical Edge Distance		Minimum Edge Distance		Reduction Factor	
	Tension	Shear	Tension	Shear	Tension	Shear
1/4	1.5 x h <sub>ef</sub>		0.8 x h <sub>ef</sub>	1-3/4"	0.75	0.25
3/8						
1/2						
5/8						
3/4						

Note: Reduction factor at critical distances equals 1.0 for edge and spacing distances between critical and minimum distances, use linear interpolation. Reduction factors are cumulative.